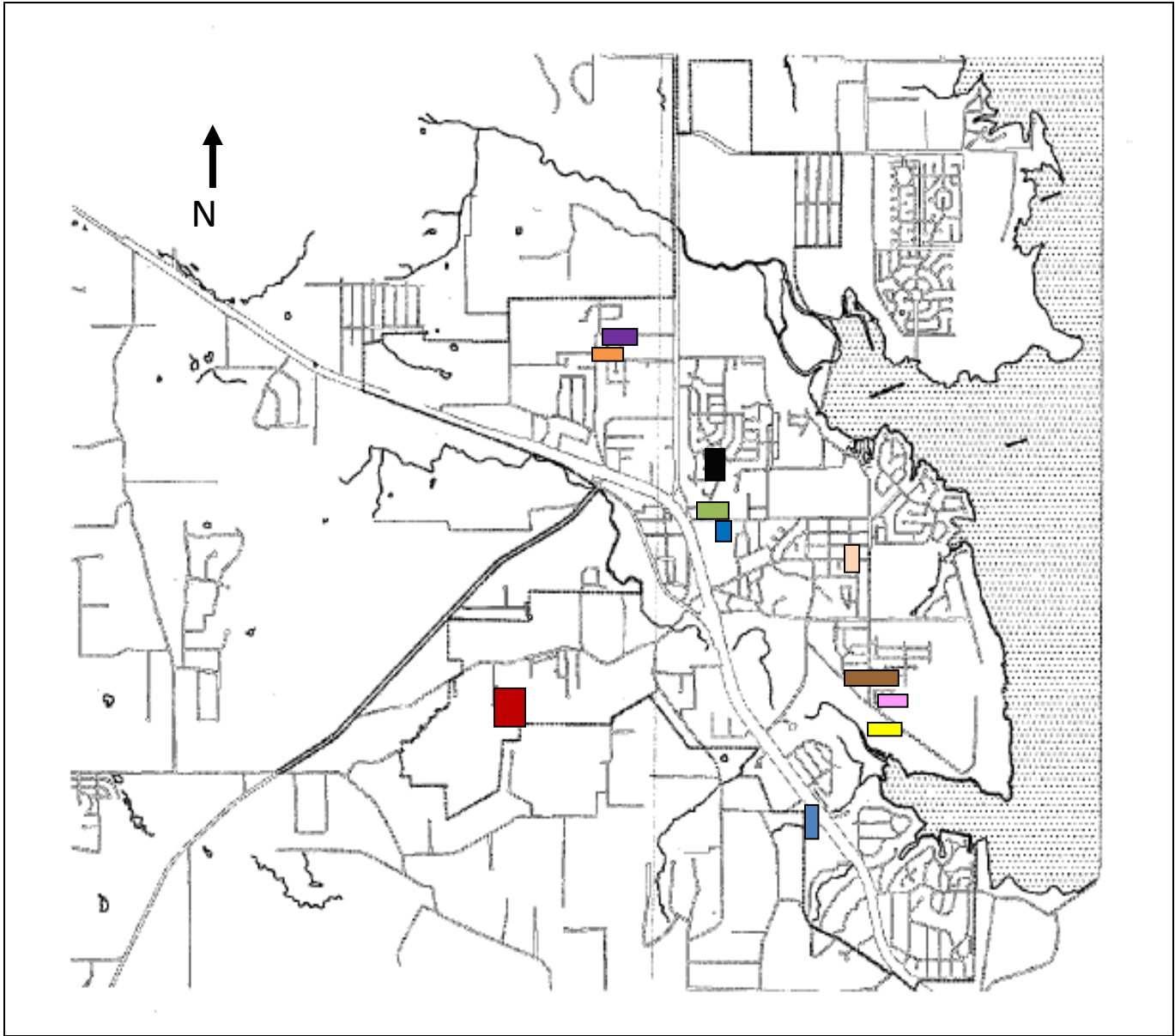


City of Azle Active Residential Subdivisions



- | | | | | | |
|--------------------------|---|---|---------------------------|---|---|
| Golden Pond Addition | - |  | Stribling Square | - |  |
| Escondido Eagle Mountain | - |  | Ashwood Park | - |  |
| Oak Harbor | - |  | Bristol Farms | - |  |
| Falcon Ridge | - |  | Eagle Lake Garden Village | - |  |
| Reatta West Apartments | - |  | Forest Glen | - |  |
| Kimbrough Single Family | - |  | | | |

SUBDIVISION LOT AVAILABILITY / HOUSE VALUATION / SIZE

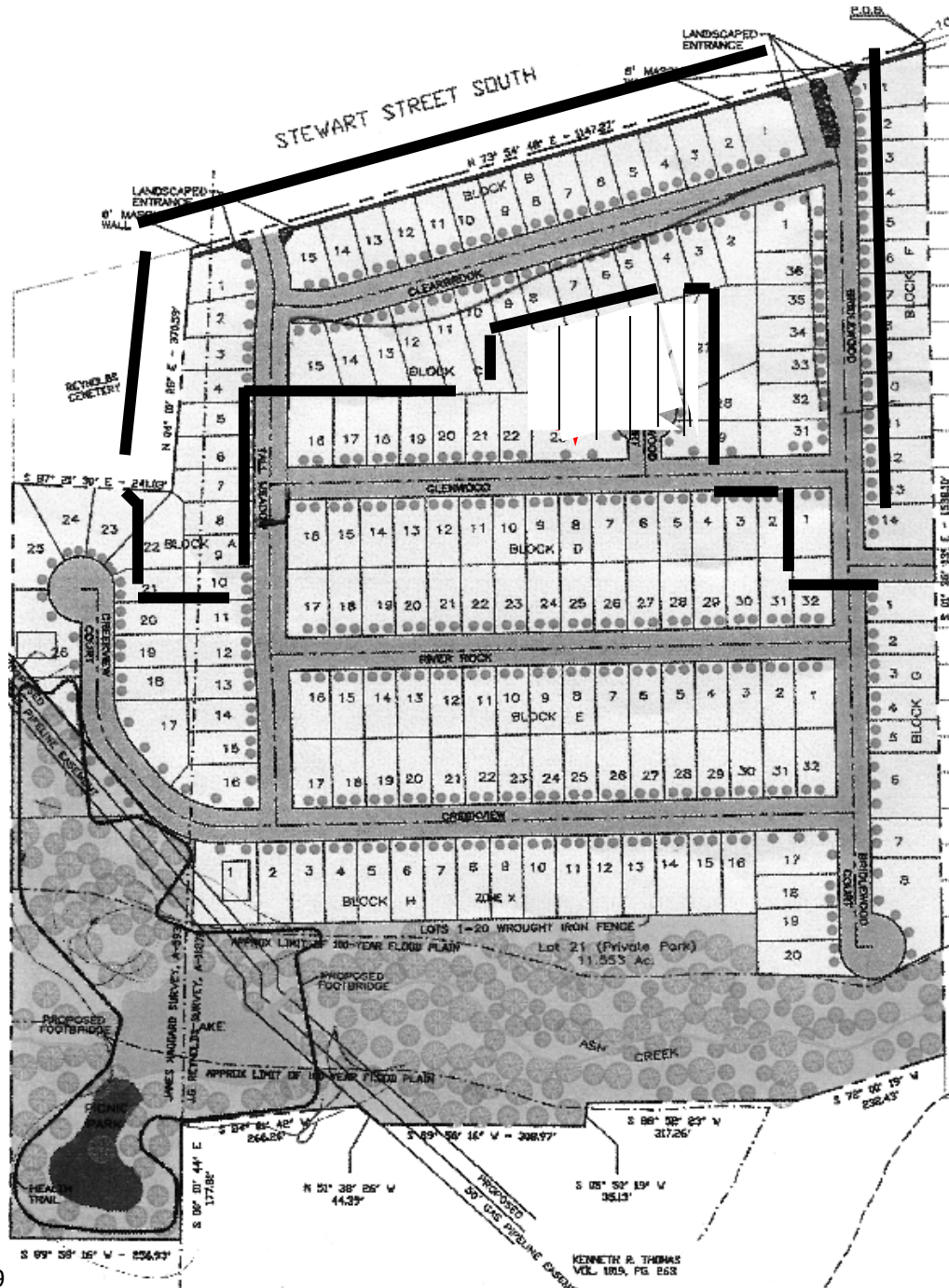
Data as of 3/31/2017

Subdivision Name	# Platted Lots	# Unplatted Lots	# Houses Constructed	Average Value of House	Average Size of House	Lots Available for Construction	Primary Builder
Golden Pond	182	0	182	\$166,045	1,838	0	Complete
Escondido Eagle Mountain	70	0	57	\$219,075	2,425	13	Varies
Oak Harbor Estates	34	0	29	\$217,538	2,408	5	Benchmark Homes
Falcon Ridge	36	0	33	\$186,461	2,064	3	All American Homes
Stribling Square	106	0	106	\$177,428	1,964	0	Complete
Ashwood Park	140	0	71	\$151,409	1,676	69	DR Horton
Bristol Farms	89	0	89	\$185,739	2,056	0	Complete
Eagle Lake Garden Village	49	***	17	\$170,743	1,890	32	TBD
Forest Glen	35	0	0	-	-	35	Benchmark Homes
Kimbrough Single Family	29	0	0	-	-	0	Riverside Homes
Total	770	0	584	\$184,305	2,040	157	
Multi-family	1	0	242 (to be constructed)	\$69,351			FCI Multi-family

Value of new homes is based on the \$90.34 per sq. ft.

*** The property has been final platted but a portion of the street has not been constructed

Golden Pond Addition

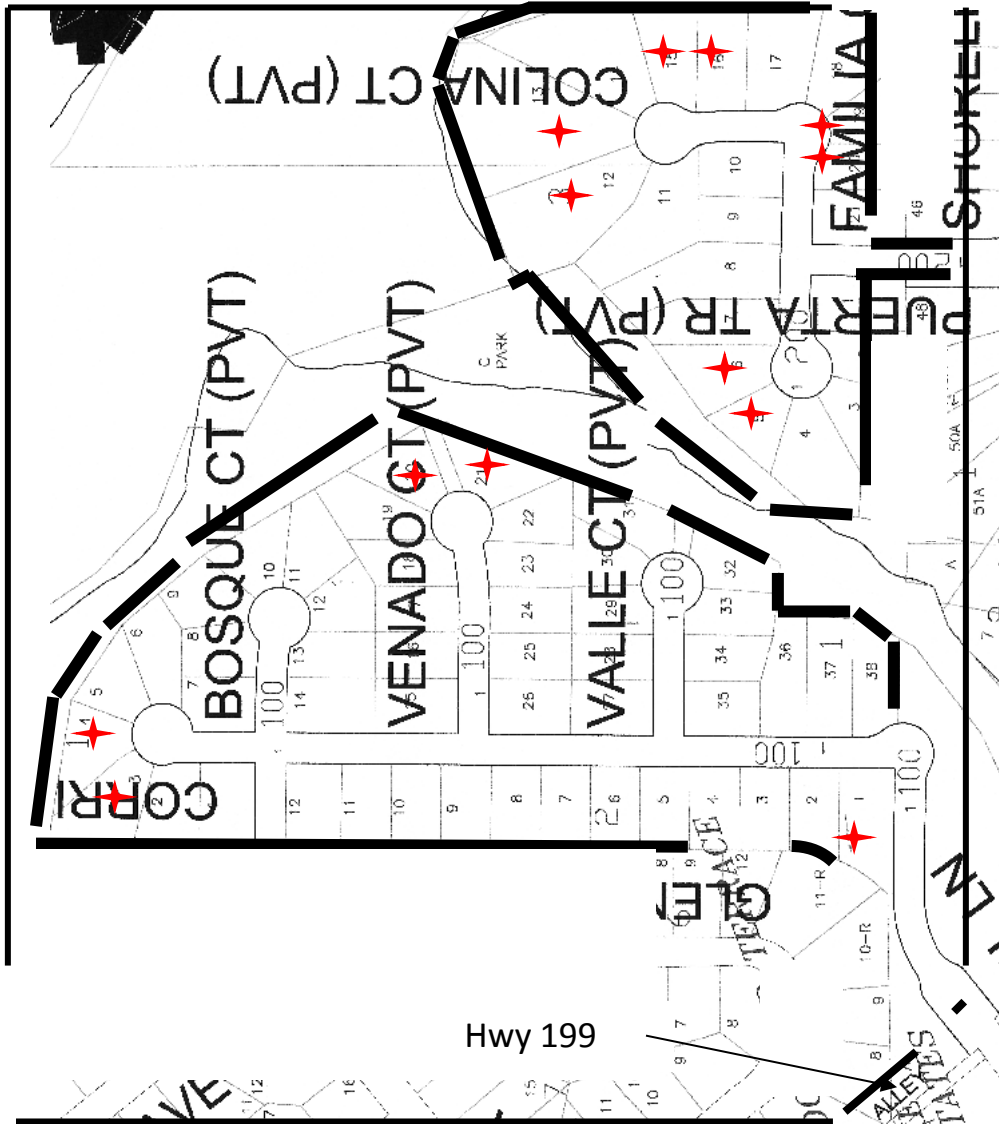


9

Zoning – Planned Development #16

- Minimum House Size:
 - 10% lots 1,250 – 1,399 sq. ft.
 - 80% lots > 1,400 sq. ft.
 - 10% lots > 1,600 sq. ft.
- Masonry: 100% front façade, Minimum 75% overall
- Landscaping: 2 – 3" caliper trees required
- Setbacks: Front – 25', Side – 5', Rear – 20'

Escondido Eagle Mountain

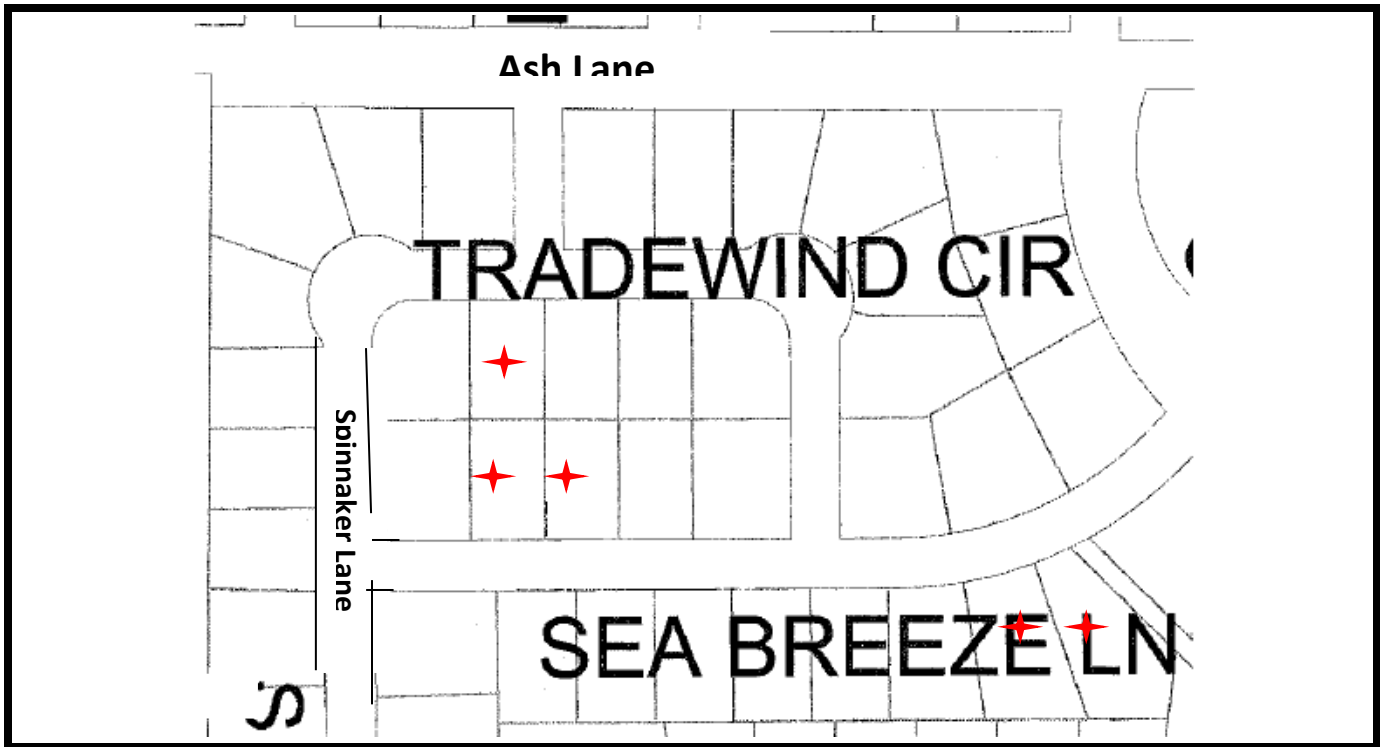


Zoning – Planned Development #20

Minimum House Size:	2,000 sq. ft
Masonry:	Minimum 75% overall
Landscaping:	Per landscape ordinance
Setbacks:	Front – 25', Side – 6', Rear – 20'

★ Lots available for

Oak Harbor Estates

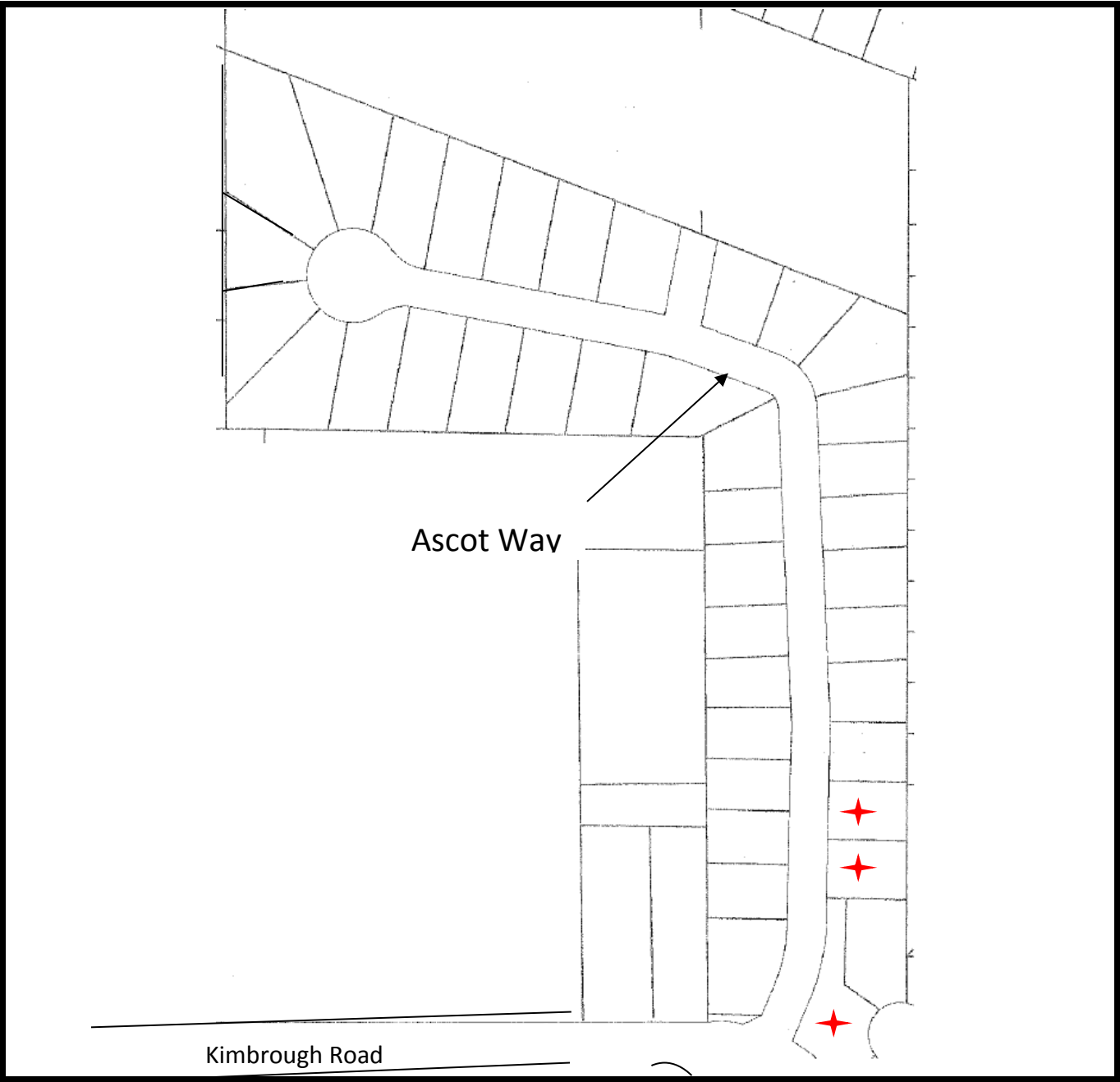


Zoning – Planned Development #2

Minimum House Size:	1,600 sq. ft
Masonry:	Minimum 65% overall
Landscaping:	Per landscape ordinance
Setbacks:	Front – 25', Side – 5', Rear – 15'

★ Lots available for

Falcon Ridge

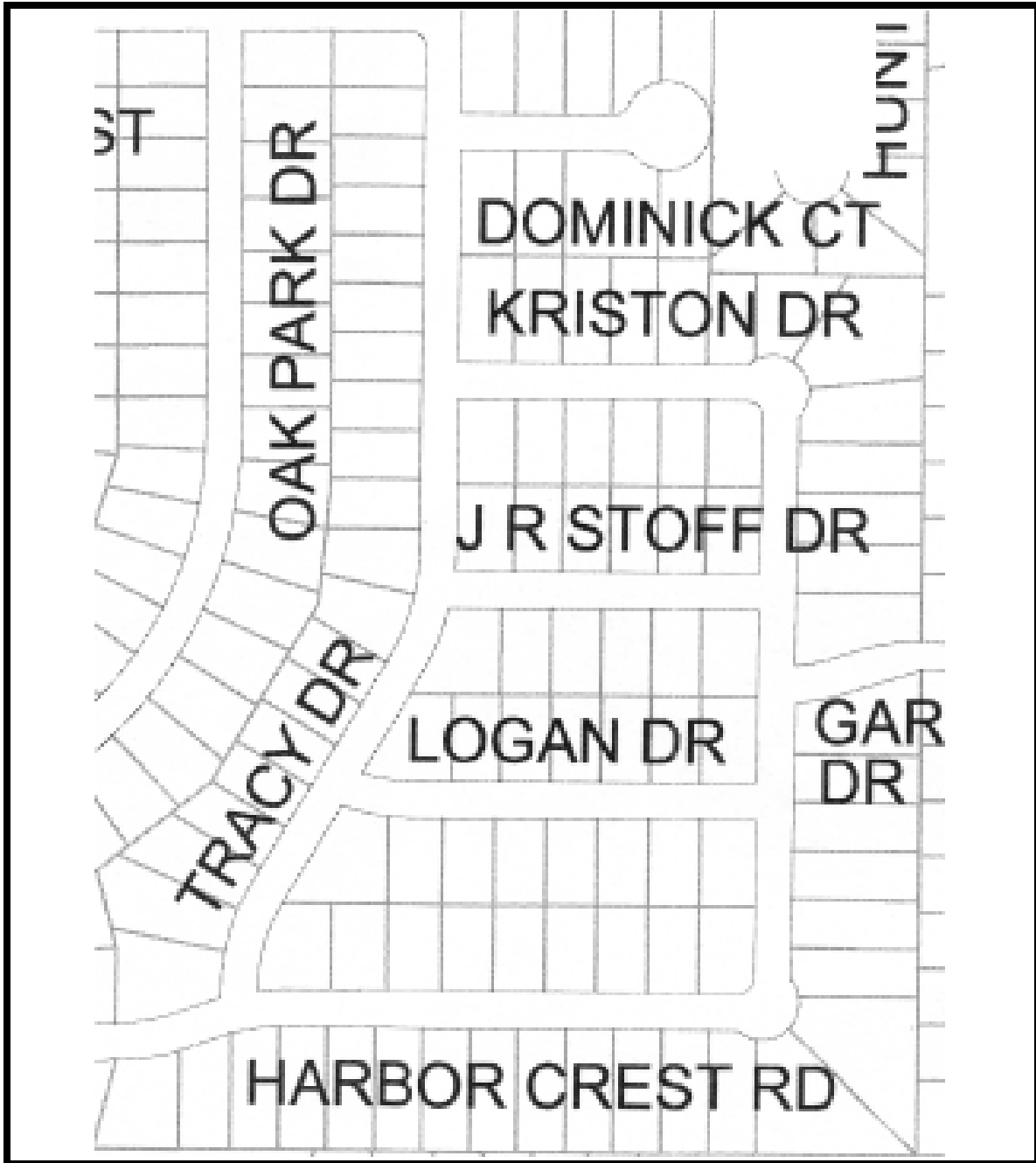


Zoning – Planned Development #18

- Minimum House Size: 1,800 & 1,600 sq. ft (depending on lot)
- Masonry: Minimum 85% overall
- Landscaping: Per landscape ordinance
- Setbacks: Front – 25', Side – 6', Rear – 20'

★ Lots available for

Stribling Square

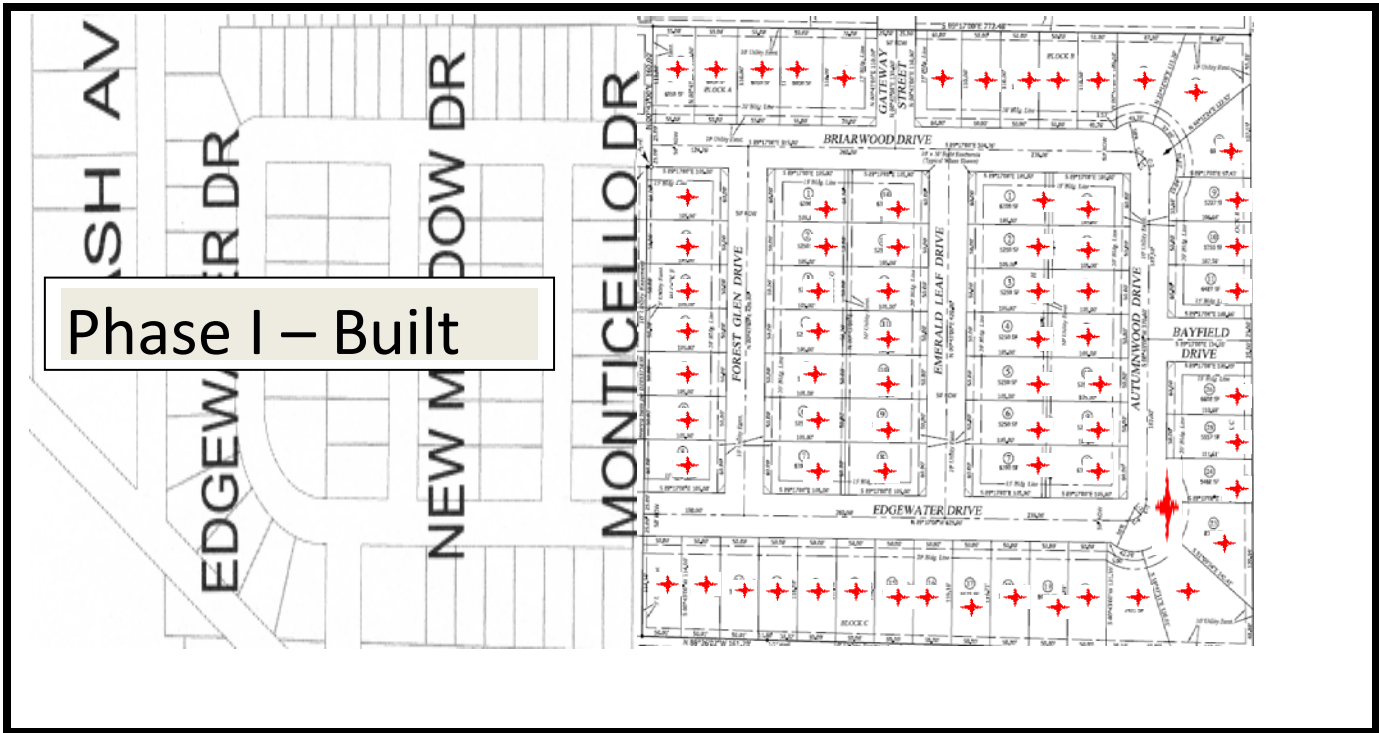


Zoning – Planned Development #11

Minimum House Size:	1,400 sq. ft
Masonry:	Minimum 100% overall
Landscaping:	Per landscape ordinance
Setbacks:	Front – 25', Side – 6', Rear – 20'

✦ Lots available for

Ashwood Park

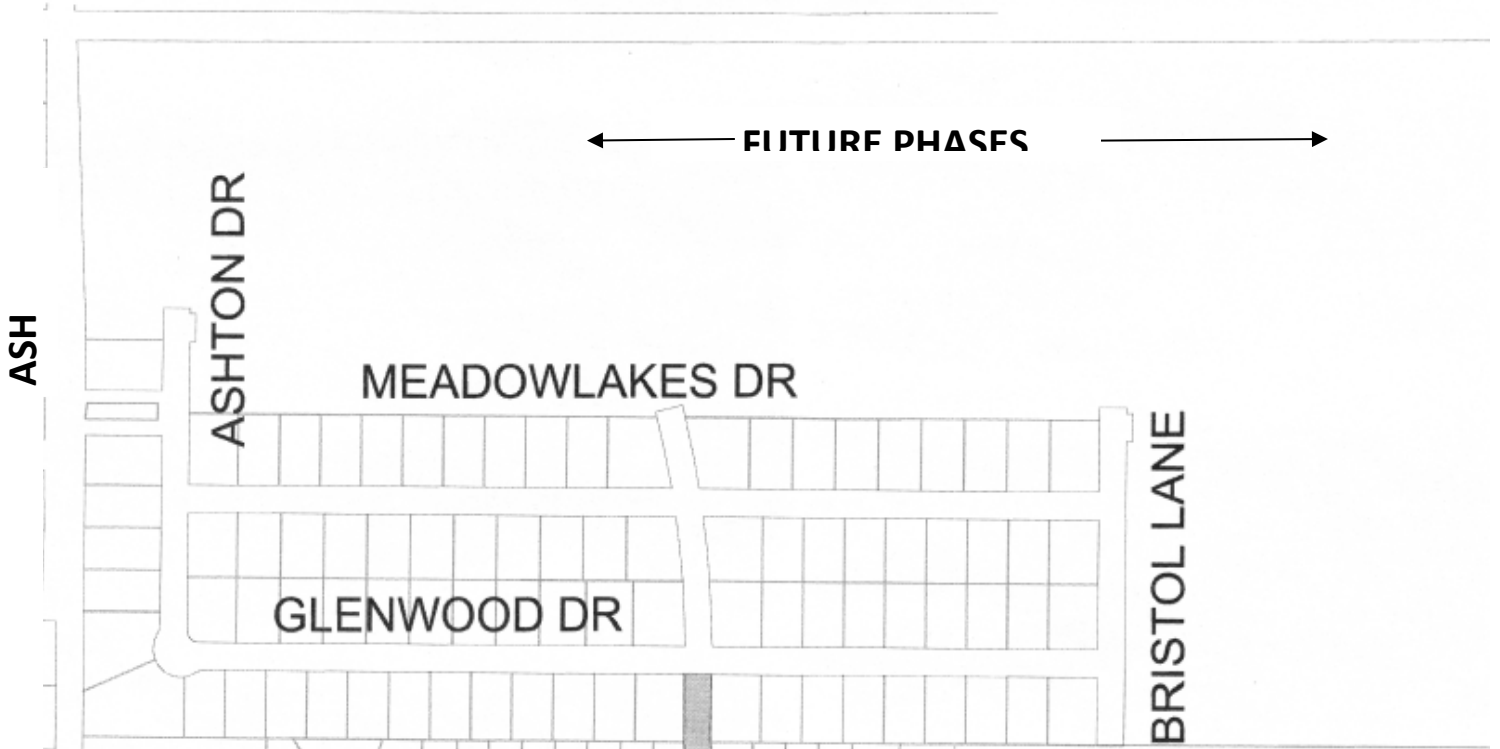


Zoning – Planned Development #15

Minimum House Size:	1,100 sq. ft along Briarwood 1,200 for the remainder
Masonry:	Minimum 65% overall
Landscaping:	Per landscape ordinance
Setbacks:	Front – 20', Side – 6', Rear – 15'

✦ Lots available for

BRISTOL FARMS

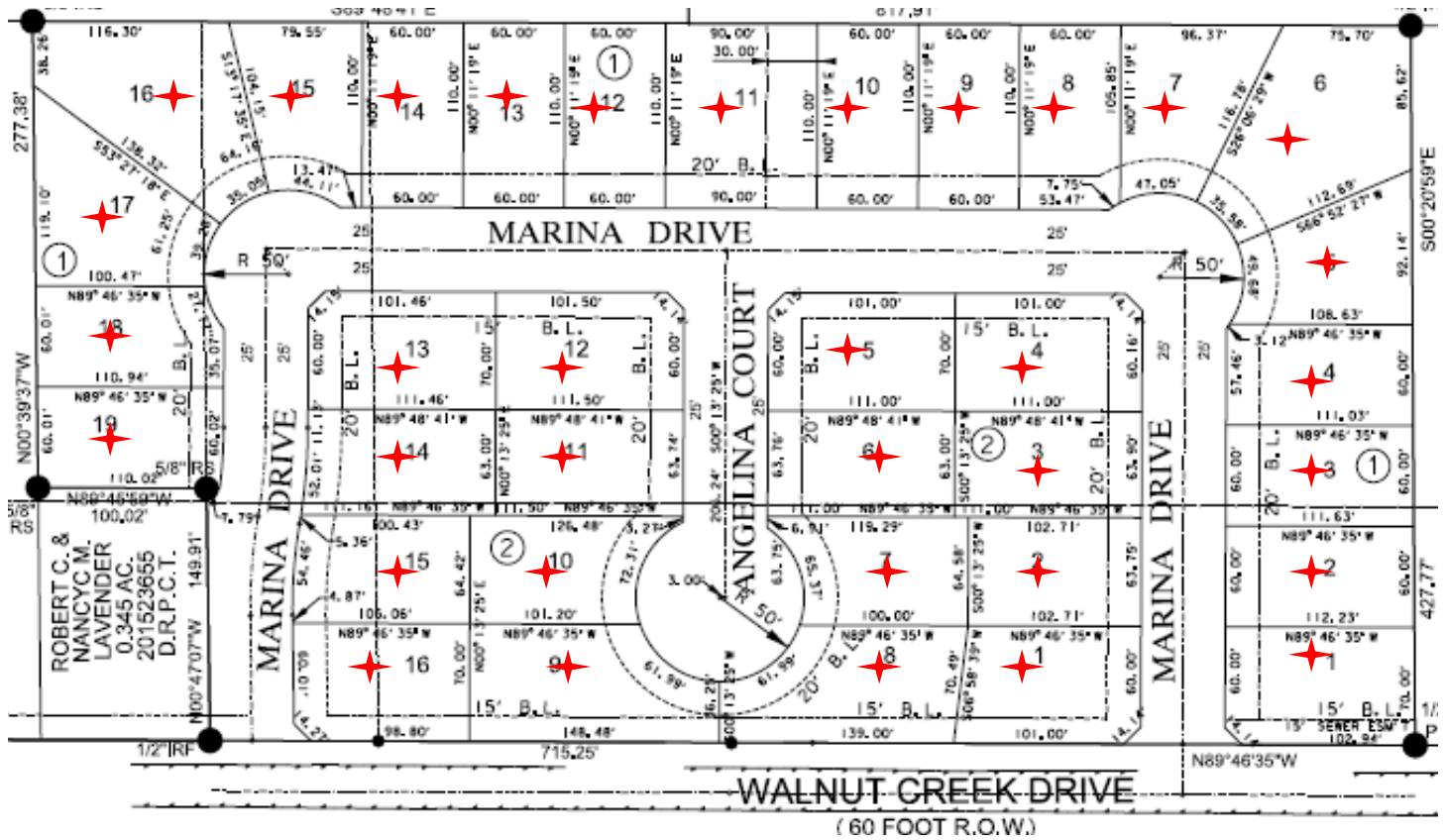


Zoning – Single Family 2

Minimum House Size:	1,600 sq. ft
Masonry:	Minimum 65% overall
Landscaping:	Per landscape ordinance
Setbacks:	Front – 25', Side – 6', Rear – 20'

★ Lots available for

Forest Glen Addition

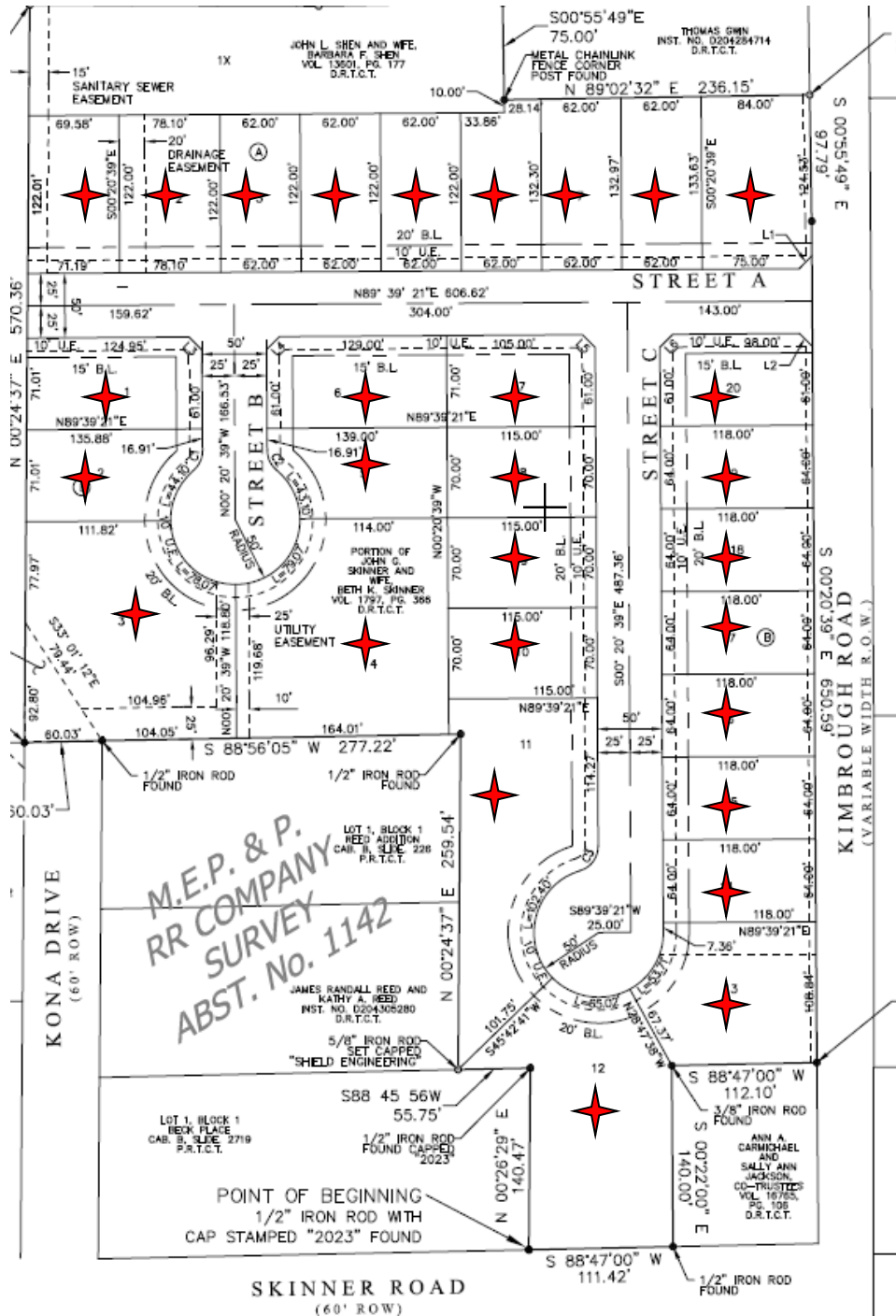


Zoning – Single Family 4

- Minimum House Size: 1,000 sq. ft
- Masonry: Minimum 65% overall
- Landscaping: Per landscape ordinance
- Setbacks: Front – 20', Side – 6', Rear – 20'

★ Lots available for

Kimbrough Single Family



Zoning – Single Family 4

- Minimum House Size: 1,800 sq. ft
- Masonry: Minimum 90% overall
- Landscaping: Per landscape ordinance w/ fully sodded or hydro-mulched yards
- Setbacks: Front – 20', Side – 6', Rear – 20'

★ Lots available for