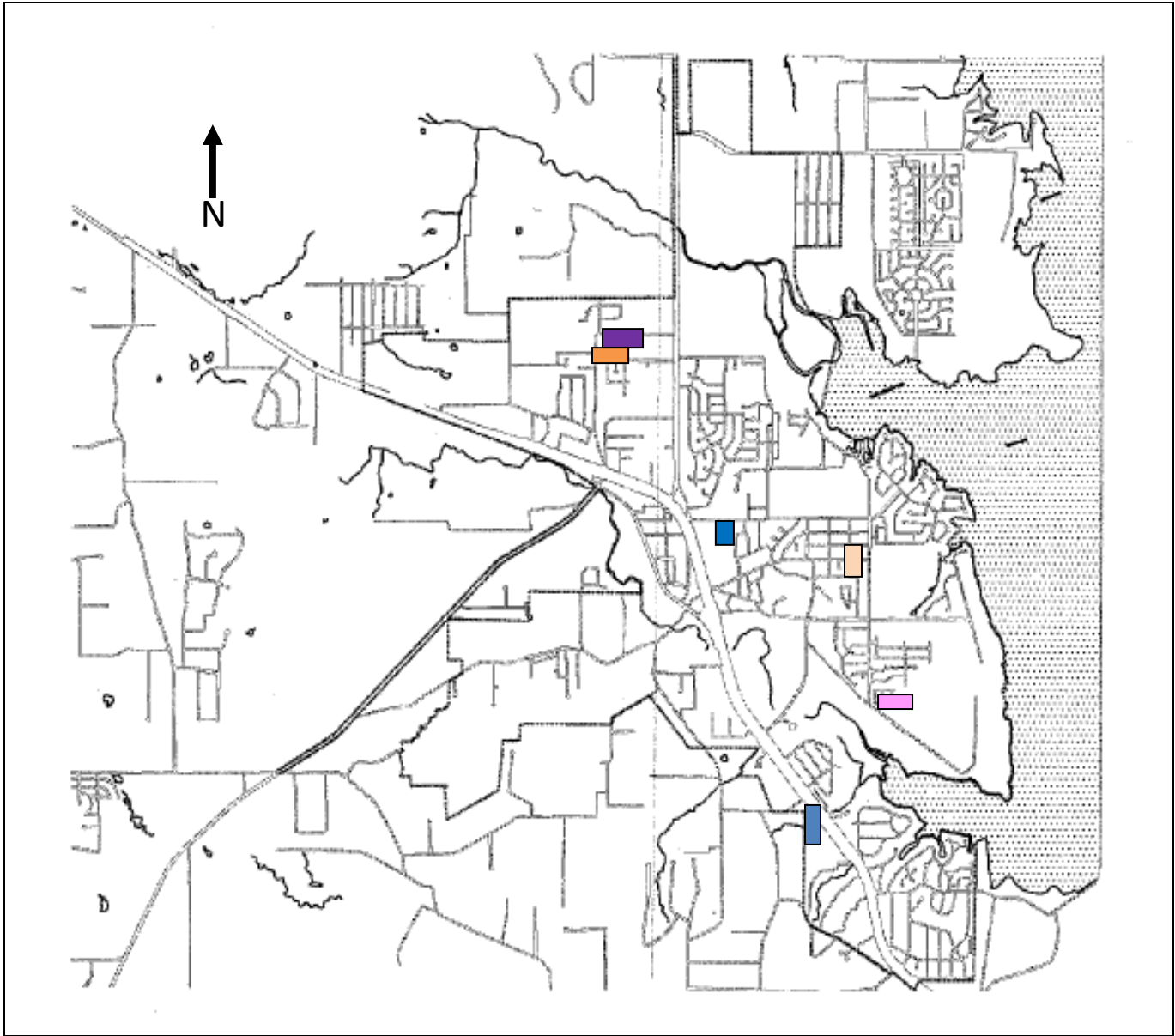


City of Azle Active Residential Subdivisions



- Escondido Eagle Mountain - 
- Oak Harbor - 
- Eagle Lake Garden Village - 
- Reatta West Apartments - 
- Kimbrough Single Family - 
- Forest Glen - 

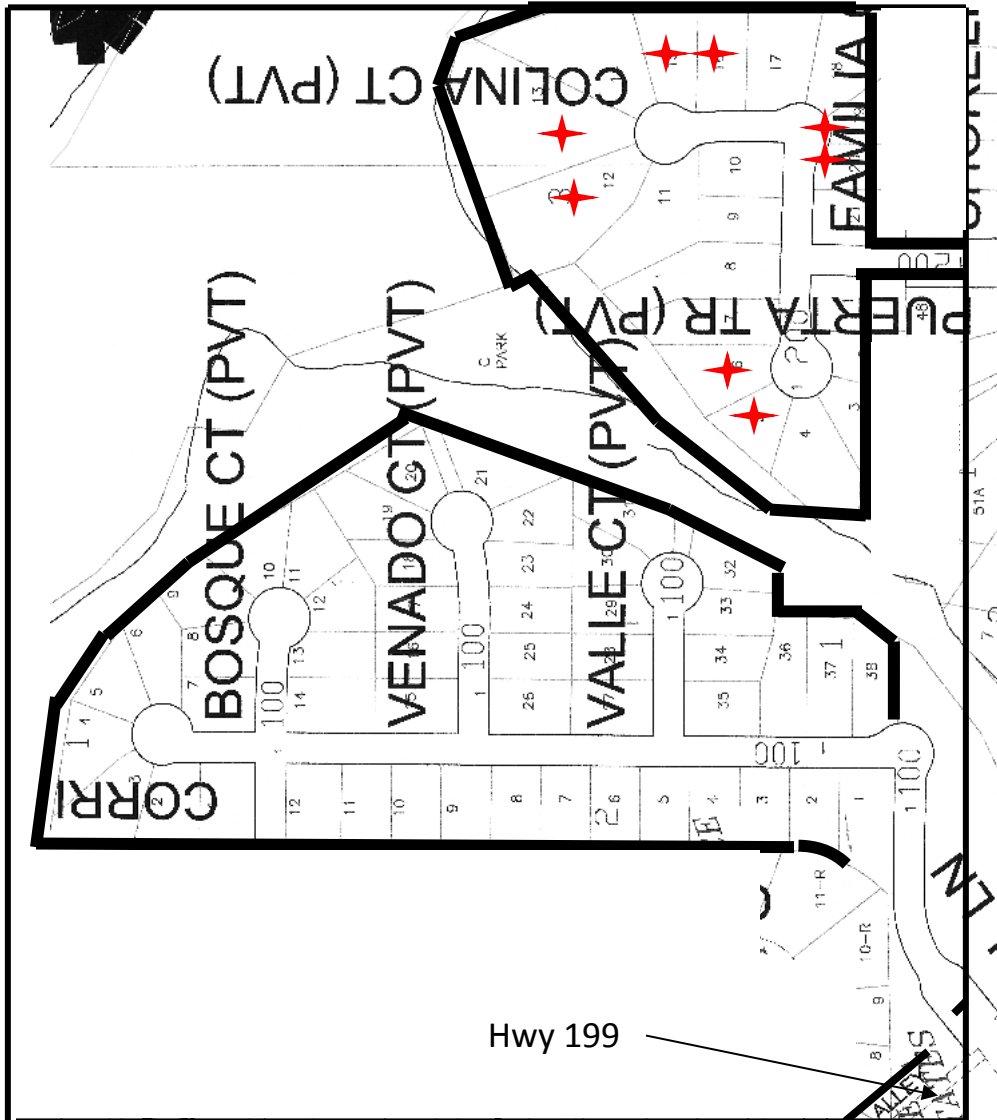
SUBDIVISION LOT AVAILABILITY / HOUSE VALUATION / SIZE

Data as of 3/1/2018

| Subdivision Name | # Platted Lots | # Houses Constructed | Average Value of House | Average Size of House | Lots Available for Construction | Primary Builder |
|---------------------------|----------------|----------------------|------------------------|-----------------------|---------------------------------|---------------------------|
| Eagle Lake Garden Village | 49 | 18 | \$189,000 | 1,890 | 31 | TBD |
| Forest Glen | 35 | 8 | \$180,000 | 1,800 | 27 | Benchmark Homes |
| Kimbrough Single Family | 29 | 6 | \$198,100 | 1,981 | 23 | Riverside Homes |
| Escondido Eagle Mountain | 70 | 62 | \$242,500 | 2,425 | 8 | Varies |
| Oak Harbor Estates | 33 | 31 | \$240,800 | 2,408 | 2 | Benchmark Homes |
| Ashwood Park | 140 | 140 | \$176,000 | 1,760 | 0 | DR Horton |
| Bristol Farms | 89 | 89 | \$205,600 | 2,056 | 0 | Complete |
| Falcon Ridge | 36 | 36 | \$209,900 | 2,099 | 0 | All American Homes |
| Golden Pond | 182 | 182 | \$183,800 | 1,838 | 0 | Complete |
| Stribling Square | 106 | 106 | \$196,400 | 1,964 | 0 | Complete |
| Total | 769 | 678 | \$202,210 | 2,022 | 91 | |
| Multi-family | 1 | 242 units | \$69,351 | | | Partin Development |

Value of new homes is based on the \$100.00 per sq. ft.

Escondido Eagle Mountain



Zoning – Planned Development #20

| | |
|---------------------|------------------------------------|
| Minimum House Size: | 2,000 sq. ft |
| Masonry: | Minimum 75% overall |
| Landscaping: | Per landscape ordinance |
| Setbacks: | Front – 25', Side – 6', Rear – 20' |

★ Lots available for construction

Oak Harbor Estates

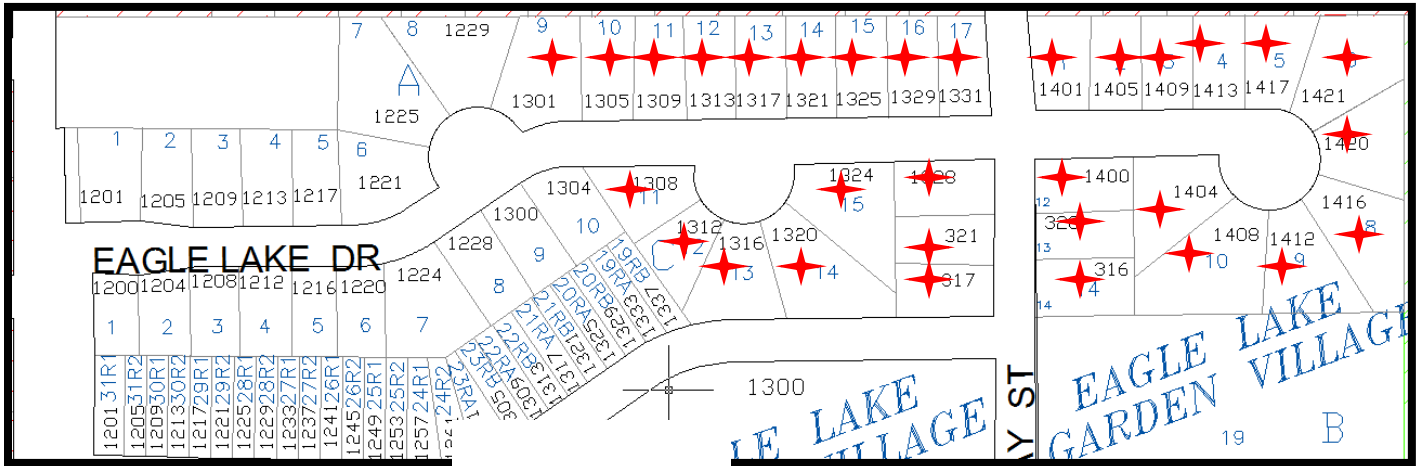


Zoning – Planned Development #2

| | |
|---------------------|------------------------------------|
| Minimum House Size: | 1,600 sq. ft |
| Masonry: | Minimum 65% overall |
| Landscaping: | Per landscape ordinance |
| Setbacks: | Front – 25', Side – 5', Rear – 15' |

★ Lots available for construction

EAGLE LAKE GARDEN VILLAGE



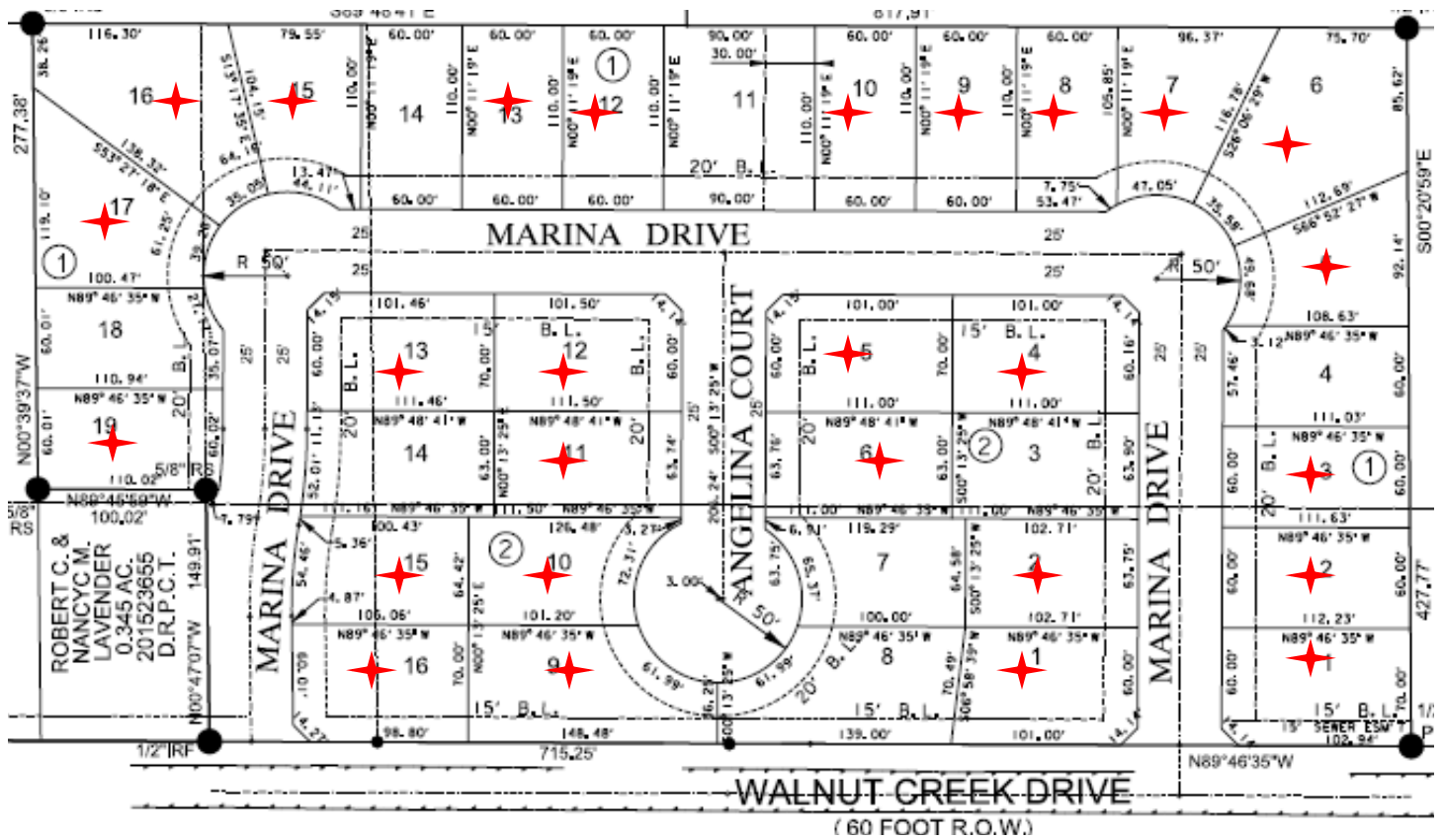
Zoning – Planned Development #1

ASH STREET

- Minimum House Size: 1,100 sq. ft
- Masonry: Minimum 65% overall
- Landscaping: Per landscape ordinance
- Setbacks: Front – 25', Side – 5', Rear – 20'

★ Lots available for construction

Forest Glen Addition

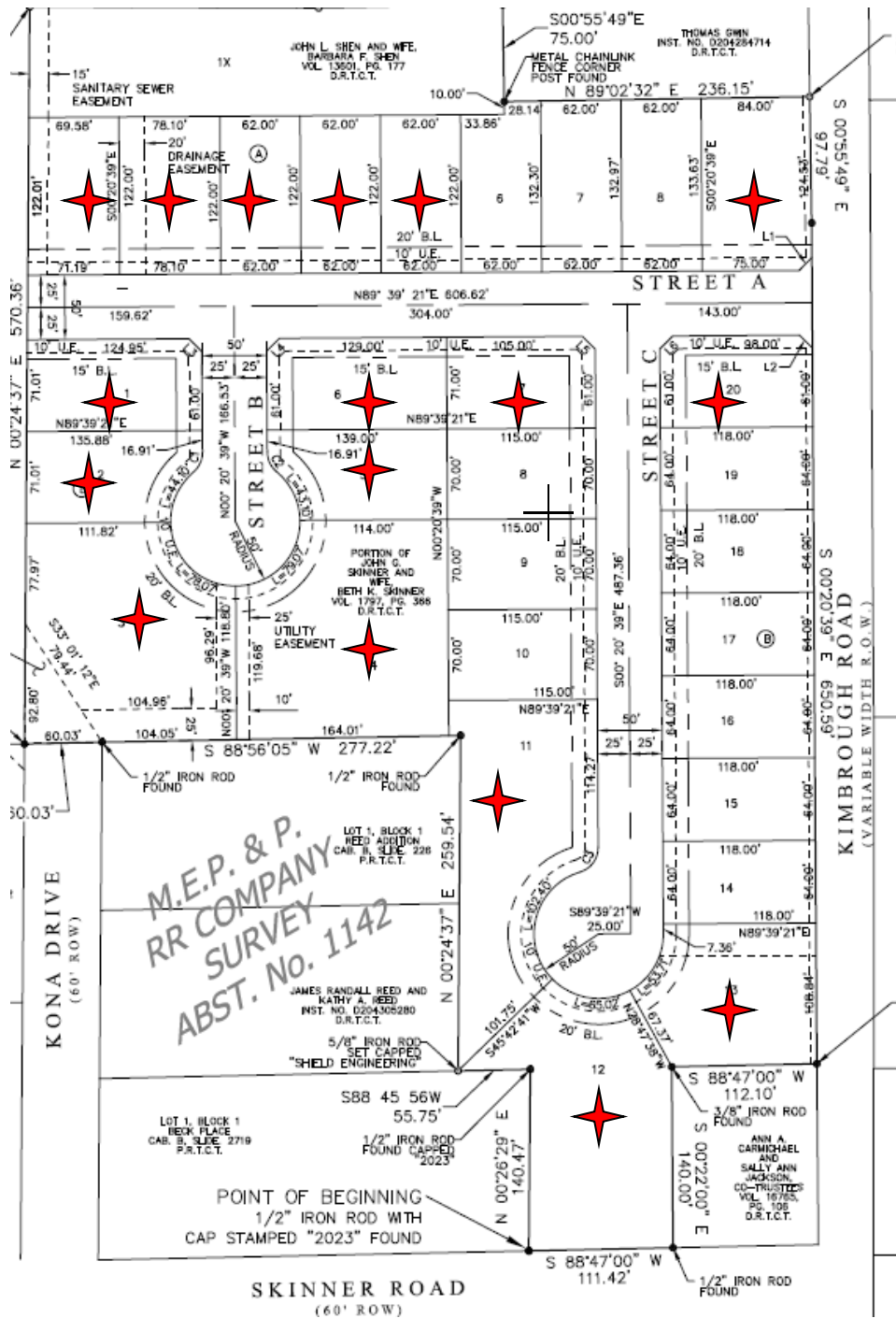


Zoning – Single Family 4

- Minimum House Size: 1,000 sq. ft
- Masonry: Minimum 65% overall
- Landscaping: Per landscape ordinance
- Setbacks: Front – 20', Side – 6', Rear – 20'

★ Lots available for construction

Kimbrogh Single Family



Zoning – Single Family 4

- Minimum House Size: 1,800 sq. ft
- Masonry: Minimum 90% overall
- Landscaping: Per landscape ordinance w/ fully sodded or hydro-mulched yards
- Setbacks: Front – 20', Side – 6', Rear – 20'

★ Lots available for construction